

Magnetic drive centrifugal pump

NHMD-Series

Materials:	PP, PVDF and high performance polymer (PEEK, ECTFE)
Flow rate:	0,5 to 46 m ³ /h
Delivery head:	up to 29 m LC
Engine power:	0,55 to 4 kW
Energy efficiency class:	IE3

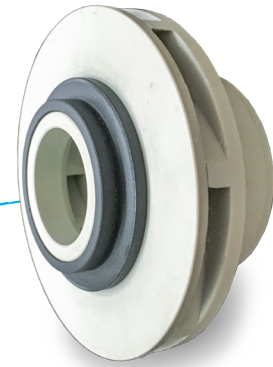
Some typical applications:

Production of semiconductors and solar cells, **gas and exhaust air scrubbers**, filtration of liquids, **use in coating plants**, operation of water treatment plants, **purging applications**, system for PCB processing, **electroplating equipment**, general mixing and circulation tasks, **redox flow applications**, disinfection systems, **Pumping toxic fluids**.

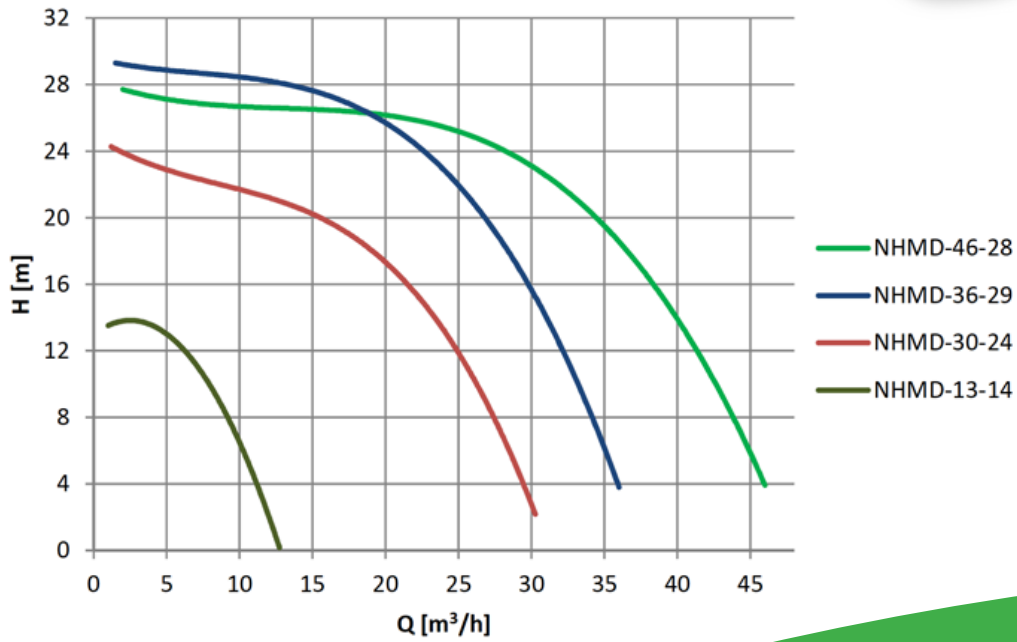


Type	Motor power kW	Suction side connection d/DN	Pressure side connection d/DN	Weight kg	Q max. m ³ /h	H max. m LQ
NHMD-13-14	0,55	40/32	32/25	10	13	14
NHMD-30-24	2,2	63/50	50/40	24	30	24
NHMD-36-29	3,0	63/50	50/40	33,5	36	29
NHMD-46-28	4,0	75/63	63/50	48	46	28

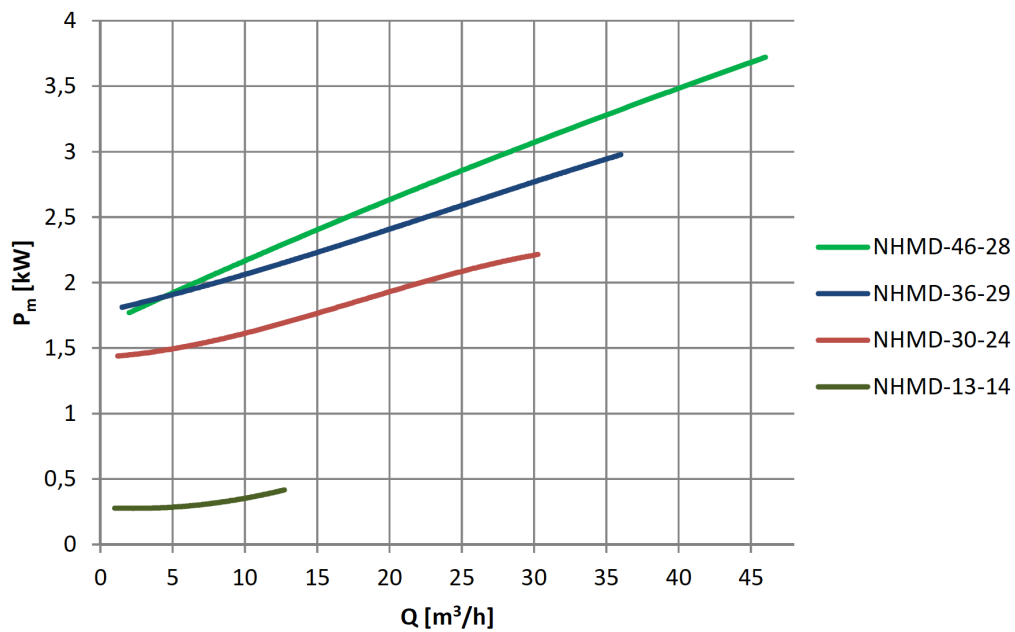
Konstruiert mit Liebe zum Detail!



Delivery head



Motor power





NEES chemical magnetic pumps are used to reliably and safely transfer chemically aggressive or highly corrosive fluids and wastewater.

Ever-growing demands on the pumps, **high runtime** expectations, enhanced **energy efficiency**, as well as highest product safety: We are constantly working to improve and redefine existing standards. 100% **product safety** for people and equipment is a principle we will not compromise in the sophisticated design of our pumps.

Thanks to their innovative and proven construction, horizontal NEES magnetic pumps of the **NHMD** series are very energy-efficient, robust and versatile.

Low-vibration operation, insensitivity to solid particles and very low pressure losses distinguish this pump. The pump can also transfer solid matter.

Optionally available:

- UL/CSA/ATEX versions
- Elastomer of EPDM (standard), FKM or FFKM)
- Sliding bearing material pairing combination: SiC/PTFE carbon fibre reinforced (standard) or SiC/SiC
- Hose nozzels, Union nuts
- Special connections
- Special designs are always possible

Characteristics:

- All wetted parts are made of PP, PVDF or high performance polymers (PEEK compound) – no metal-to-liquid contact
- Depending on application and plain bearing materials, dry running can last several minutes
- Special paint for use in aggressive atmosphere
- Motor with multi-range voltage
- Not damaged, even if used in the wrong direction
- Abrasion-free, therefore suitable for high purity applications
- Energy efficient design
- Hermetically sealed
- Motor according to IE3

We'll be happy to advise you



NEES Pumpen GmbH
Tulpenstrasse 8
DE-75045 Walzbachtal

Fon +49 721 756936 56
Fax +49 721 756936 57
info@nees-pumpen.de